

State of Wyoming Corner Record

(In compliance with the **CORNER PERPETUATION AND FILING ACT**, Wyoming Statutes, 1997 Section 33-29-140 et. seq., and the Rules and Regulations of the Board of Professional Engineers and Professional Land Surveyors)

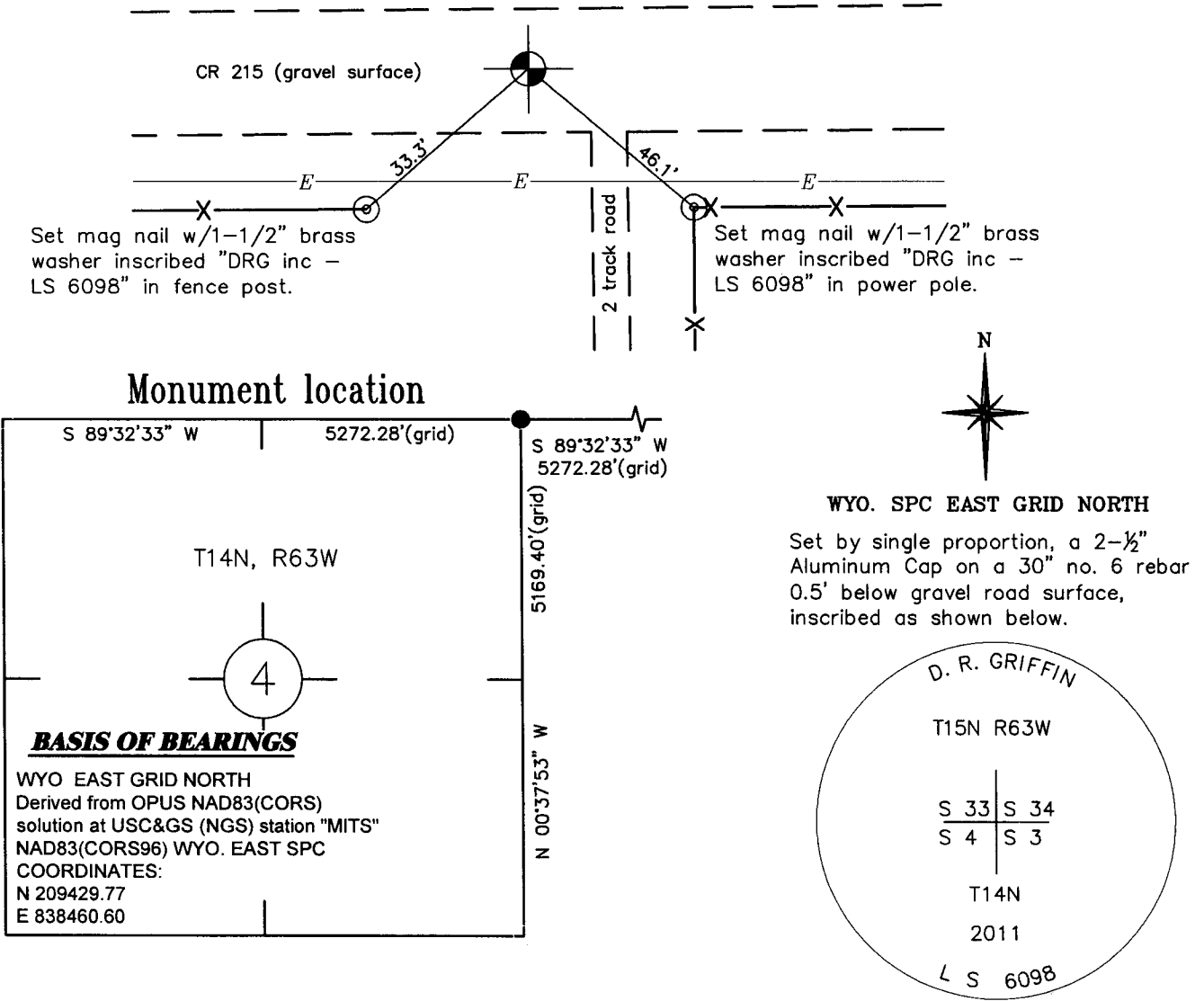
Reverse side of this form may be used if more space is needed.

Record of original survey and citation of source of historical information (if corner is lost or obliterated). Description of corner monumentation evidence found and/or monument and accessories established to perpetuate the location of this corner. Sketch of relative location of monument, accessories, and reference points with course and distance to adjacent corner(s) (if determined in this survey). Method and rationale for reestablishment of lost or obliterated corner.

U.S.G.L.O. 1870 Record: Set a Limestone 18x10x4 for corner to sections 3, 4, 33 & 34.

No monument or evidence of accessories found. Corner is lost.

Establish corner by single proportion from the monument (1-1/2 Al. Cap) found for the northeast corner of Section 3 and the monument (LS 519) found for the northeast corner of Section 5.



Date of Field Work: 3/12/11

Office Reference: 18322

Monument Inscription

Cross Index Plat

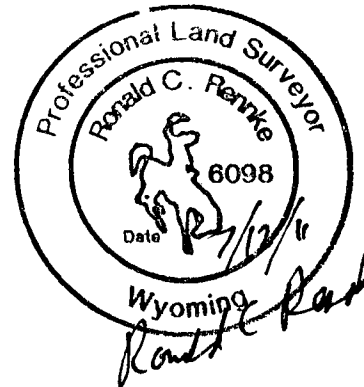
	1	2	3	4	5	6	7	8	9	10	11	12	13	14	15	16	17	18	19	20	21	22	23	24	25	
A																										A
B																										B
C		6	5	4	3	2	1																			C
D																										D
E																										E
F																										F
G			7	8	9	10	11	12																		G
H																										H
J																										J
K																										K
L			18	17	16	15	14	13																		L
M																										M
N																										N
O																										O
P			19	20	21	22	23	24																		P
Q																										Q
R																										R
S																										S
T			30	29	28	27	26	25																		T
U																										U
V																										V
W																										W
X			31	32	33	34	35	36																		X
Y																										Y
Z																										Z

Firm/Agency, Address

RONALD C. RENNKE
D. R. GRIFFIN & ASSOCIATES
1414 ELK STREET
ROCK SPRINGS, WYOMING 82901
 Telephone Number: (307) 362-5028

This corner record was prepared by me or under my direction and supervision.

SEAL & SIGNATURE



RECORDED 8/09/2011 AT 10:18 AM REC# 573801 BK# 2231 PG# 485
 DEBRA K. LATHROP, CLERK OF LARAMIE COUNTY, WY PAGE 1 OF 1

Corner Name Northeast Corner Section 4, T 14 N, R 63 W, 6th P.M.
 Same as the Southeast Corner Section 33, T 15 N, R 63 W, 6th P.M.
 County: Laramie, Wyoming

Cross-Index No.: A-13
 Cross-Index No.: Z-13